

FC SWATH 75

75M ULTIMATE ITALIAN LUXURY ULTRA-TECH FUEL-CELLS YACHT

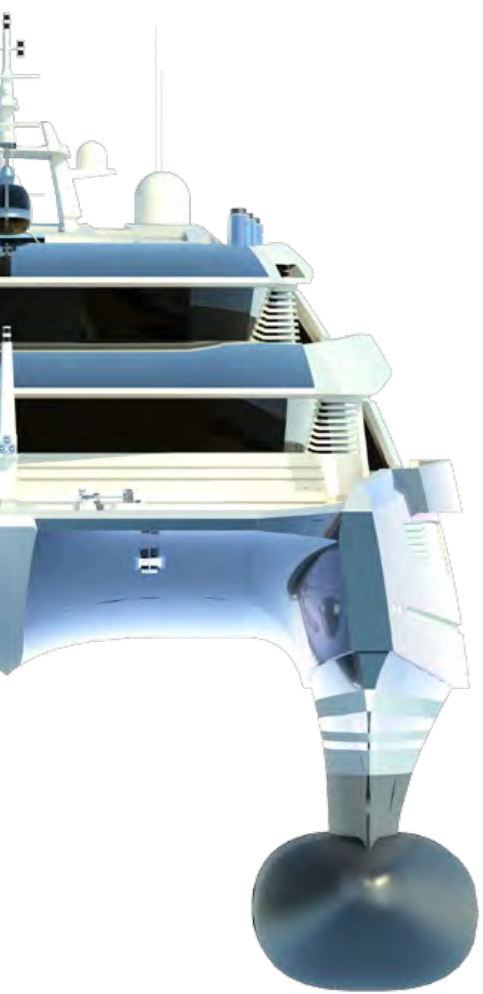


FINCANTIERI
YACHTS

TECHNOLOGY OF BEAUTY



FC SWATH 75 - 75M ULTIMATE ITALIAN LUXURY ULTRA-TECH FUEL-CELLS YACHT - designed by ANDREA VALICELLI specially for FINCANTIERI YACHTS



FINCANTIERI YACHTS TECHNOLOGY OF BEAUTY

Fincantieri yachts are products of outstanding quality. They are the final result of a special synergy of advanced technical, design and construction capabilities, perfected over more than two centuries of experience building all types of oceangoing vessel. We infuse into every yacht the passion for quality and a keen eye for detail stemming from the experience of generations of skilled engineers, craftsmen and leaders that are the Fincantieri team. They operate together in sophisticated yards like Muggiano supported by the world's finest yachting subcontractors. Vessels are designed and constructed with precision under the watchful eye of skilled project managers, combining the best design and production techniques with managerial expertise at the disposal of discerning owners who seek excellence, in an open and proactive interaction that is pleasant, flawless and rewarding.



A COMPLETELY GREEN CONFIGURATION TO TAKE YOU EVERYWHERE



New clients with new needs in a new world. In response to this challenge, the engineering team at Fincantieri Yachts and our Design Team have developed and combined advanced technologies in an innovative luxury-vessel concept, in a completely green configuration.

The new FC SWATH 75 not only has memorable aesthetics, but she will also give owners unprecedented cruising and berthing comfort, with her inherent stability, and minimum noise and vibrations even over long voyages with the chance to savour a lifestyle of utmost luxury on board, courtesy of her large beach area and wide public areas.

Thanks to the fuel-cell propulsion system, FC SWATH 75 will have zero-emission capability, to sail in ECA areas in a fully green configuration – an approach aimed at highly demanding-future oriented owners.

Andrea Vallicelli



FC SWATH 75

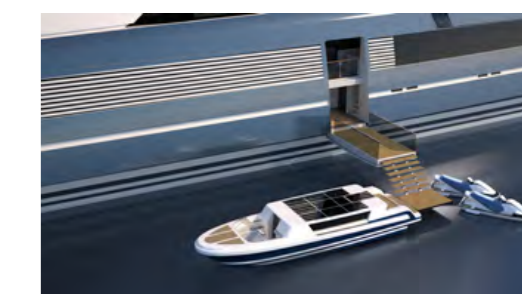
75M ULTIMATE ITALIAN LUXURY ULTRA-TECH FUEL-CELLS YACHT

Length overall	75 m
Max beam	24 m
Half-load draught	5.5 m
Gross tonnage	abt. 3,400 GRT
Owner and guests	12
Captain and crew	24
Hull material	Aluminium alloy
Max speed	abt. 18.0 kn
Range @ abt. 6 kn on hydrogen	abt. 450 nm
Range @ abt. 12 kn on diesel	abt. 4,000 nm
Mechanical propulsion	2 x MM/EE, abt. 2,500 kW each coupled to FPP shaft lines
Electric propulsion power	2 Motor/generators, abt. 300 kW each
Electricity generation	2 x DD/GG abt. 450 kW each
Auxiliary generation	2 x Fuel cells abt. 250 kWe each

FUEL CELLS AND REGULATIONS

What about the regulations? Existing examples of vessels powered by fuel cells are limited to military applications or case studies on commercial vessels to investigate the new technology. The former are not subject to any civil regulations, but the results obtained provide a valid basis for developing commercial applications. The marine applications' current status offers hope for further development of the fuel cells, to increase the units' power and reduce costs.

A broader application of such technology, without service limitations, would need a common regulation to come into force. As can also be seen from its official website, IMO is developing an International Code of Safety for Gas-fuelled Engine Installations in Ships (the IGF Code); a final version is available and is expected to be sent to the individual flag states within the following year for acceptance. In the coming years, the IGF code will also regulate the application of the fuel cells, in good time to potentially develop a real construction.



A 1,100-m² LUXURY INDOOR SPACE
FOR AN UNMATCHED LIFESTYLE



INTERNAL VIEW OF THE SWIMMING POOL WITH THE GLASS DOORS OPEN

A pool as a fluid crystal carpet, the centrepiece of the swim area, to enjoy indoors and outdoors.

THE MOST EXCLUSIVE LARGE PRIVATE BEACH
ON THE SEA



EXTERNAL VIEW OF THE SWIMMING POOL WITH THE GLASS DOORS OPEN

EXQUISITE COMFORT AND LUXURY LIFESTYLE
WHEREVER YOU ARE, WHATEVER THE WEATHER



VIEW FROM THE TOP

The external gross area is 1,800 m², 50% more than that of a typical 90-m motor yacht.
With its platform configuration, FC SWATH 75 can reach many amazing outfitted ports and areas throughout the world.

THE REDUCED WATERPLANE AREA ENHANCES
SEA-KEEPING BEHAVIOUR IN EXTREME SITUATIONS

The reduced waterplane area minimizes the vertical accelerations caused by the waves, compared to a traditional mono-hull. The 24m beam meets the strict damage-stability requirements while affording the pleasure of large internal and external living spaces.



VIEW OF THE STERN PLATFORM

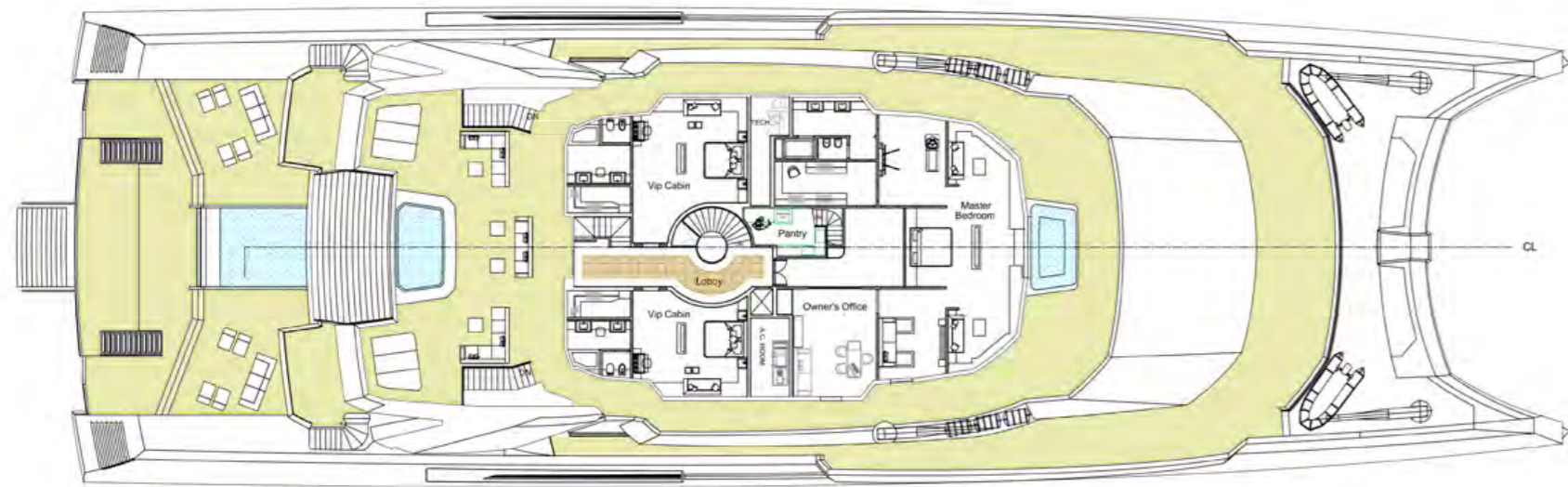
FC SWATH 75

75M ULTIMATE ITALIAN LUXURY ULTRA-TECH FUEL-CELLS YACHT

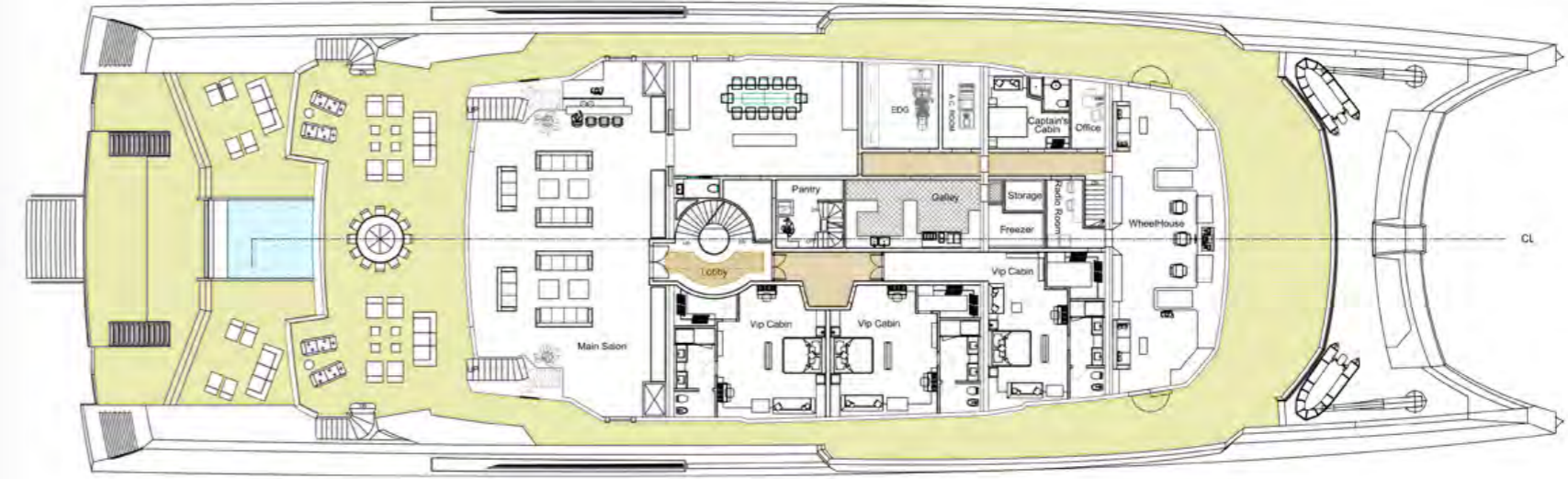


Configuration without fuel cell

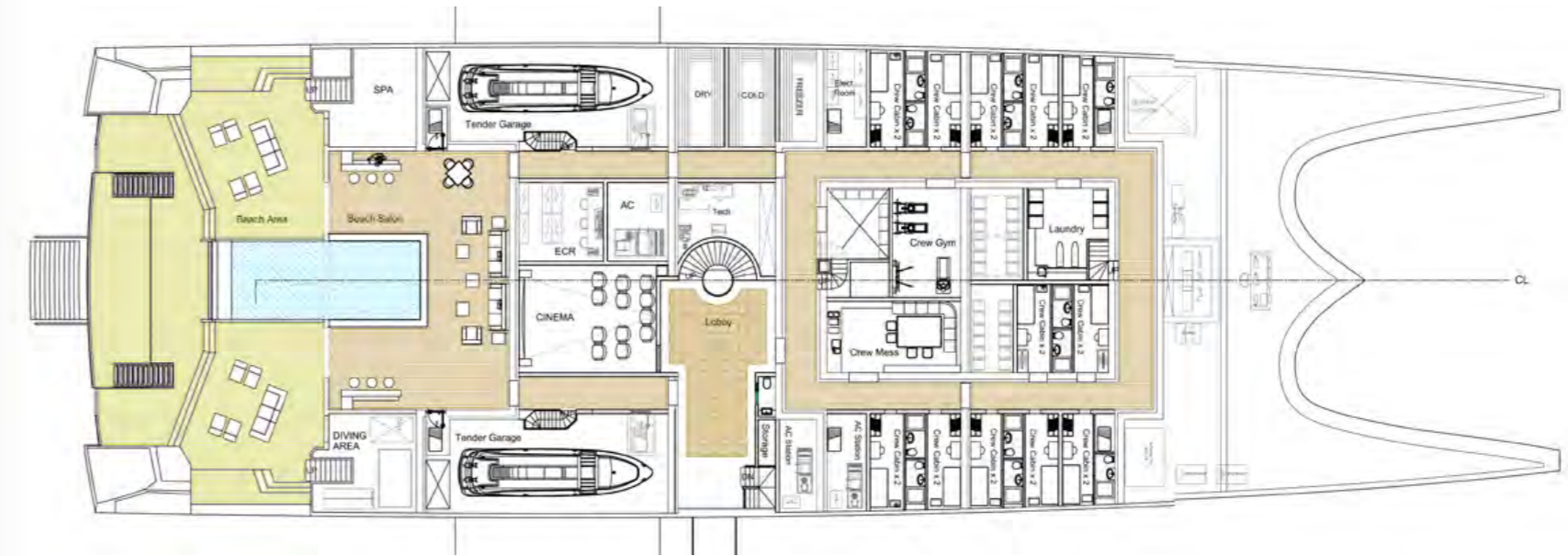
PROFILE



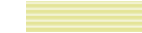


UPPER DECK



MAIN DECK



LOWER DECK

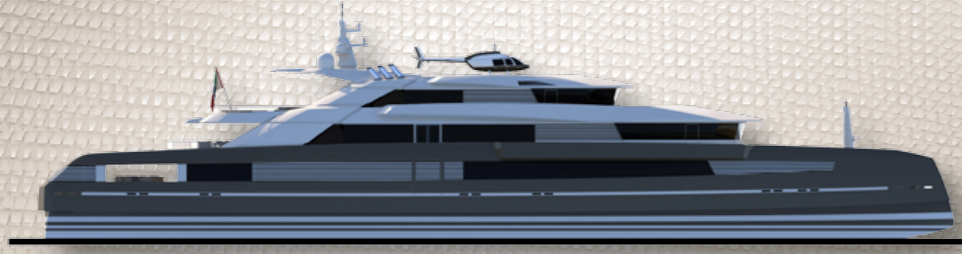
-  COATING 1
-  COATING 2
-  COATING 3



BLUE



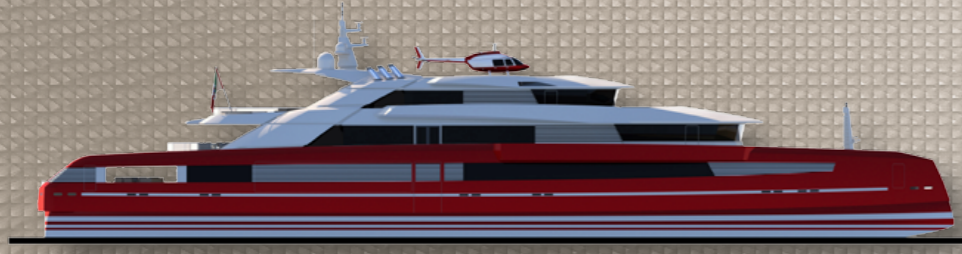
GREY



BLACK



RED





FINCANTIERI
YACHTS

TECHNOLOGY OF BEAUTY