



# OTTANTACINQUE

*by pininfarina*

85M LUXURY MOTOR YACHT



**FINCANTIERI**  
YACHTS

TECHNOLOGY OF BEAUTY

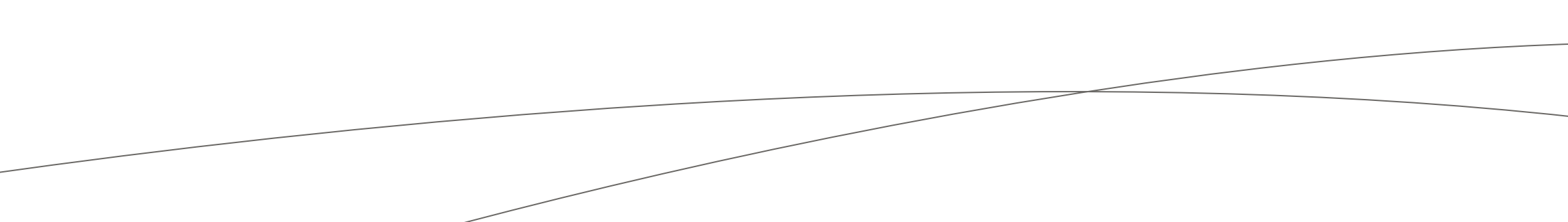


OTTANTACINQUE - 85m LUXURY MOTOR YACHT - designed by PININFARINA specially for FINCANTIERI YACHTS

“ITALIAN, TECHNOLOGICALLY ADVANCED,  
COMFORTABLE AND WITH ESSENTIAL LINES.  
HER BEAUTY IS ABSOLUTE.”

Paolo Pininfarina





# FINCANTIERI YACHTS TECHNOLOGY OF BEAUTY

Fincantieri Yachts are products of outstanding quality. They are the final result of a special synergy of advanced technical, design and construction capabilities, perfected over more than two centuries of experience building all types of oceangoing vessels. We infuse into every yacht the passion for quality and a keen eye for detail, stemming from the experience of generations of skilled engineers, craftsmen and leaders that are the Fincantieri team. They operate together in sophisticated yards like Muggiano supported by the world's finest yachting subcontractors. Vessels are designed and constructed with precision under the watchful eye of skilled project managers, combining the best design and production techniques with managerial expertise, at the disposal of discerning owners who seek excellence, in an open and proactive interaction that is pleasant, flawless and rewarding.



# ELITE ITALIAN MANUFACTURING AND CREATIVITY MEET ON THE SEA



This project is the first fruit of our partnership with Fincantieri, where two kinds of excellence come together to produce the fullest flowering of Italian creativity, luxury and workmanship.

The result, in the finest Pininfarina tradition, is a statuesque floating residence with elegant, dynamic surfaces, where style marries function, aerodynamics, ergonomics and on-board comfort.

And every detail has been designed to harmonise with the vessel's aesthetic theme.

A handwritten signature in black ink, which reads "Paolo Pininfarina". The signature is fluid and cursive, with the first letters of the first and last names being capitalized and prominent.

Paolo Pininfarina





# OTTANTACINQUE

*by pininfarina*

85M LUXURY MOTOR YACHT

Length overall	85.9 m
Max beam	14.80 m
Full-load draught	3.90 m
Gross tonnage	2,460 GRT
N° of decks	5
Owner's and guests' cabins	7
Captain's, officers', crew and staff cabins	11
Max no. of berths (14 pax + 19 crew & staff)	33

Propulsion system	2 diesel engines with fixed pitch propellers
Propulsion – engines max power	2 x abt. 2,350 ekW
Max speed (100% power)	18 kn
Nautical range at 12 knots (5% margin)	abt. 6,000 nm
Generators – engines max rated power	3 x abt. 470 ekW
Bow thrusters	1 x abt. 300 kW
Stabilizers (at anchor)	2 pairs fixed



**FINCANTIERI**  
YACHTS

*pininfarina*



# SPACE FOR SPACE, UNSURPASSABLE SEA VIEWS



TWIN POOLS ON THE MAIN DECK

---

Twin pools, raised almost flush with the side bulwark, and an elevated sun bed offer uninterrupted views of the sea from the main deck. With the adjustable bottom, the water depth can be varied and even reduced to zero to create a large open platform spanning over 160 m<sup>2</sup> as a lifestyle amenity.

# A GENEROUS STERN AREA THE EYE ROAMS OUT TO THE HORIZON



ANCHORAGE CONFIGURATION



CENTRAL SUN LOUNGER ON THE MAIN DECK

Lower deck accommodates an imaginative beach club of almost 170 m<sup>2</sup> connected to the lower-deck spa area. The twin pools' glass walls let light suffuse through the water to the spa. At night, the effect is magical: the pools become sources of luminescence, enlivening the main deck and bathing the beach club and spa with lustre.

# BY DAY AND BY NIGHT, THE OWNER'S DECK IS A UNIQUE STAGE



---

At the stern, the owner's deck offers a spacious, configurable veranda by day with a sun bed and tables that become a lounge. The luxurious infinity pool is the perfect spot for gazing unhurriedly over the sea.

The bow features a generous private veranda for the owner with dining area, lounge and a Jacuzzi with an ample integrated sun pad. The bridge deck incorporates a helipad with direct access to the lobby via the central lift and stairs connecting the yacht's various decks.

Moving from one deck to another provides an extra sensory experience: the lift and the spiral staircase linking the different decks are naturally lit by a skylight on the roof deck that creates an enchanting play of light.





OWNER'S DECK WITH INFINITY POOL

FACING PAGE

BOW PRIVATE LOUNGE AREA WITH JACUZZI

# IN THE FORMS OF THE INTERIORS, FUNCTIONALITY FUSES WITH STYLE



MAIN LOUNGE AND DINING AREA ON THE MAIN DECK

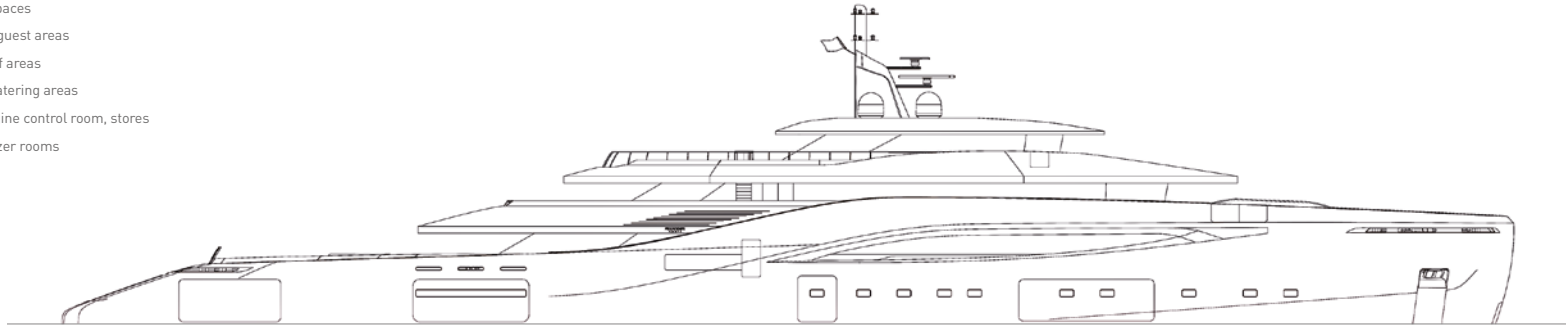
The main lounge on the main deck is an ample and extremely versatile loft with a wide range of uses: as a dining room, piano bar, living room or cinema. The ceiling openings communicate with the owner's lounge and the upper deck, exploiting the light from the stern windows and lending a feeling of real spaciousness.



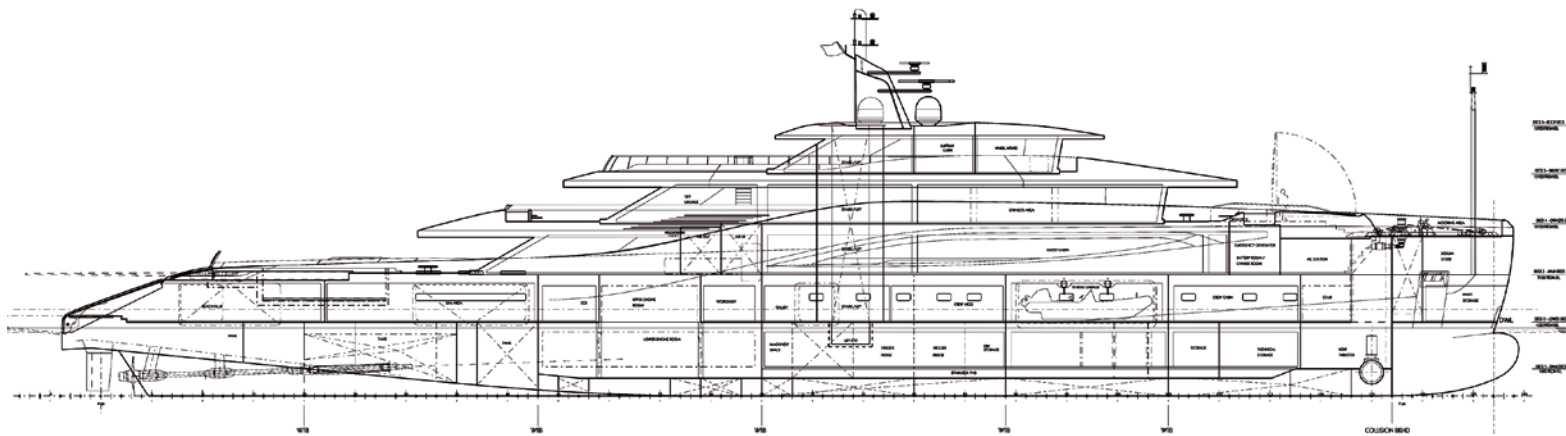
BEACH CLUB IN THE STERN AREA OF THE LOWER DECK

At the stern, the lower deck is home to one of the yacht's many areas for relaxation and entertainment in mutual privacy. When the transom door and the side platforms open down over the sea, this imaginative beach club expands to more than 170 m<sup>2</sup> with every available comfort, including a bar, sunbathing area and diving station. Courtesy of the stairs up to the main deck and the windows in the pool sides, light filters through the water and illuminates the beach bar in an exquisite play of rippled reflections.

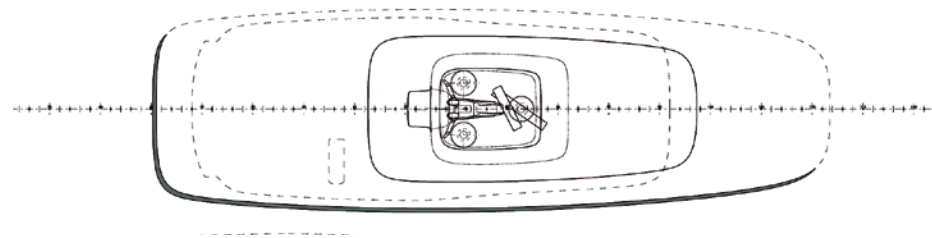
- External areas
- Technical spaces
- Owner and guest areas
- Crew & staff areas
- Service & catering areas
- Garage, engine control room, stores
- Cold & freezer rooms



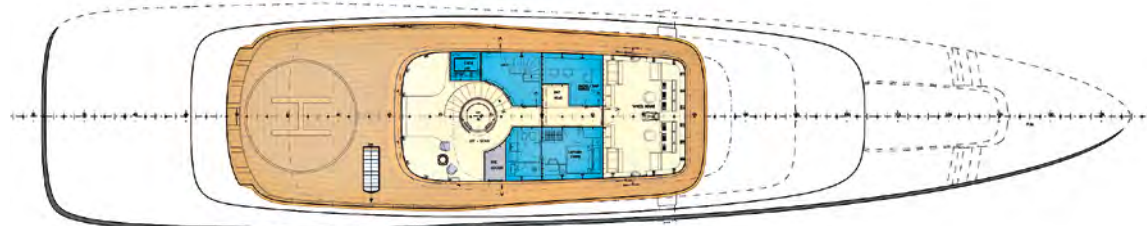
PROFILE



LONGITUDINAL SECTION



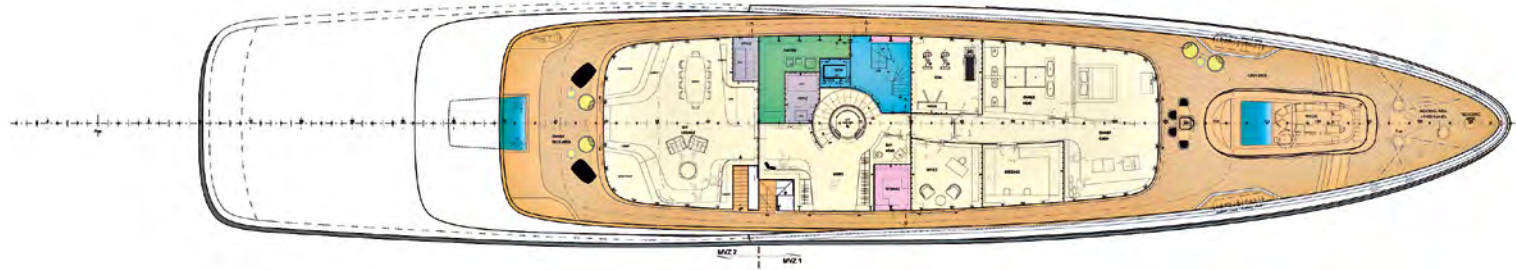
ROOF DECK



BRIDGE DECK



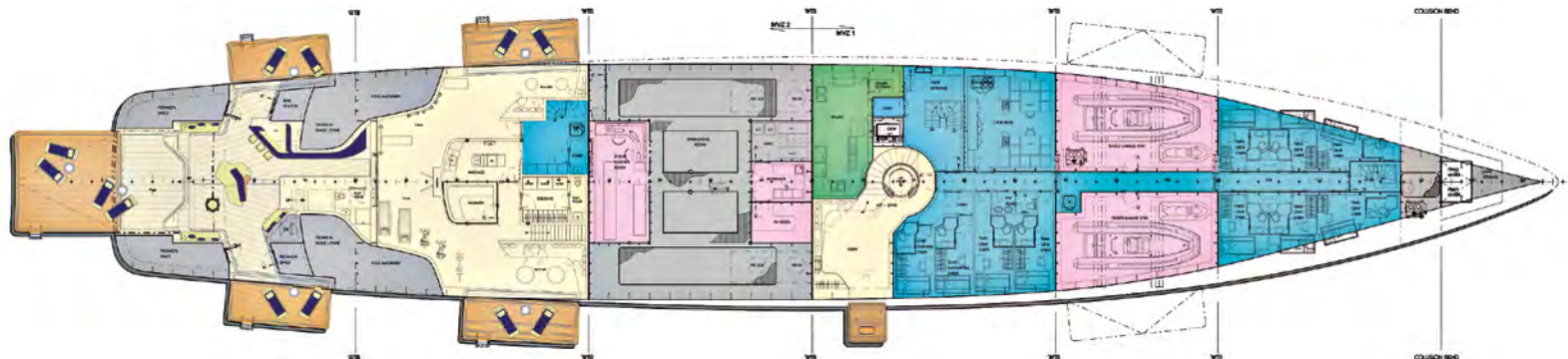
*pininfarina*



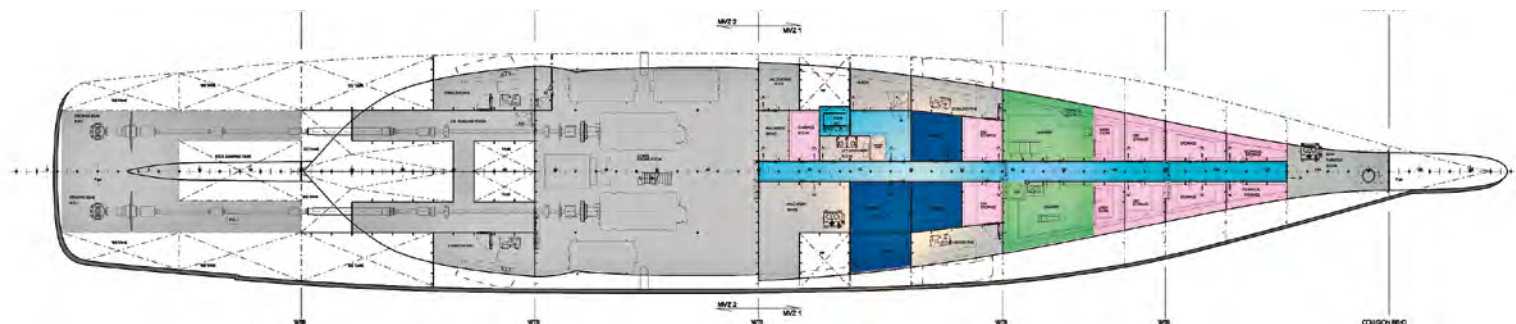
OWNER'S DECK



MAIN DECK



LOWER DECK



TANK DECK







**FINCANTIERI**  
YACHTS

TECHNOLOGY OF BEAUTY